

Research Article

***In-Situ* Analysis of Essential Fragrant Oils Using a Portable Mass Spectrometer**

Fred P. M. Jjunju ¹, **Stamatios Giannoukos**,^{1,2} **Alan Marshall**,¹ and **Stephen Taylor**³

¹Department of Electrical Engineering and Electronics University of Liverpool, Brownlow Hill, L69 3GJ, UK

²Laboratory of Atmospheric Chemistry, Paul Scherrer Institute, 5232 Villigen, Switzerland

³Q-Technologies Ltd, 100 Childwall Road, Liverpool L15 6UX, UK

Correspondence should be addressed to Fred P. M. Jjunju; fjjunju@liv.ac.uk

Received 27 November 2018; Revised 16 January 2019; Accepted 5 March 2019; Published 1 April 2019

Academic Editor: David Touboul

Copyright © 2019 Fred P. M. Jjunju et al. This is an open access article distributed under the Creative Commons Attribution License, which permits unrestricted use, distribution, and reproduction in any medium, provided the original work is properly cited.

A portable mass spectrometer was coupled to a direct inlet membrane (DIM) probe and applied to the direct analysis of active fragrant compounds (3-methylbutyl acetate, 2-methyl-3-furanthiol, methyl butanoate, and ethyl methyl sulfide) in real time. These fragrant active compounds are commonly used in the formulation of flavours and fragrances. Results obtained show that the portable mass spectrometer with a direct membrane inlet can be used to detect traces of the active fragrant compounds in complex mixtures such as essential fragrant oils and this represents a novel *in-situ* analysis methodology. Limits of detection (LOD) in the sub-ppb range (< 2.5 pg) are demonstrated. Standard samples in the gaseous phase presented very good linearity with RSD % at 5 to 7 for the selected active fragrant compounds (i.e., isoamyl acetate, 2-methyl-3-furanthiol, methyl butanoate, and methyl ethyl sulphide). The rise and fall times of the DIM probe are in the ranges from 15 to 31 seconds and 23 to 41 seconds, respectively, for the standard model compounds analysed. The identities of the fragrance active compounds in essential oil samples (i.e., banana, tangerine, papaya, and blueberry muffin) were first identified by comparison with a standard fragrance compounds mixture using their major fragment peaks, the NIST standard reference library, and gas chromatography mass spectrometry (GC-MS) analysis. No sample preparation is required for analysis using a portable mass spectrometer coupled to a DIM probe, so the cycle time from ambient air sampling to the acquisition of the results is at least 65 seconds.

1. Introduction

Fragrances and flavors are a key part of modern food, drinks, cosmetics, aromatherapy, and many other personal hygiene products. The most important activities in the flavor and fragrance industry are quality control, the search for natural sources for novel fragrant compounds, the development of sampling, and analytical technologies [1]. Currently there is no standard analytical method for the online direct analysis and monitoring of the fragrance active components during the processing and quality control stages. Traditional analytical techniques such as solid phase extraction (SPE) [2, 3] and liquid/liquid extraction (LLE) [1, 4, 5] followed by gas or liquid chromatography mass spectrometry (GC-MS or LC-MS) [6] are routinely used in the analysis and quantification of the active components of the fragrance and flavors with exceptional sensitivity and specificity. However, sample

collection and transfer to an offsite laboratory is required [7–9]. These steps are labor intensive and time consuming and require skillful sample preparation personnel [7, 10]. There is a clear need for portable analytical technologies that are field ready to allow *in-situ* analysis at the source [11–17]. This is useful not only for quality control, but also for the development of new fragrant products to satisfy the increasing consumer demand [7]. As it will be shown in this study, a portable mass spectrometer combined with a direct inlet membrane (DIM) probe can meet such criteria.

Membrane introduction mass spectrometry (MIMS) has often been utilized in gathering on-line diagnostic data from complex mixtures present in air or water such as those found in reacting chemical streams [18], environmental monitoring [19], and security and pharmaceutical intermediates [20–22]. Exposure of the sample stream to a semipermeable membrane can be used to selectively introduce compounds

present in the fluid matrix into the mass spectrometer by pervaporation [18, 23, 24]. The rate of sample transfer across the membrane depends on its solubility, diffusivity and the membrane material [18]. Compounds that are highly soluble on a polydimethylsiloxane (PDMS) membrane, such as the trihalomethanes, can be measured at high parts-per-trillion (ppt) to low parts per billion (ppb) levels [23]. Once the analyte(s) are introduced into the vacuum system, neutral molecules in vapor phase can be ionized by an electron impact ionization source (EI) or glow discharge source (GDEI) [25]. MIMS is thus characterized by its simplicity, speed and sensitivity. However, it has in the past been limited to laboratory settings due to the cost, size, high vacuum, and power requirement required of mass spectrometers [26, 27].

The development of small footprint portable mass spectrometers is analogous to that of portable computing devices. Miniaturized, light weight, low cost mass spectrometers combined with a membrane sampling system could expand applicability. Possible deployments range from space exploration, food safety monitoring [28], forensics [29–33], and environmental monitoring to personal usage [34–38]. Miniaturization of mass spectrometers is a systematic exercise [39], which involves customized and optimized designs of mass analyzers, ion transfer devices, electronics, and vacuum systems [29, 40–42].

Cooks and Ouyang pioneered the on-site analysis of condensed-phase and semivolatiles organics in aqueous phase using small footprint miniaturized quadrupole ion trap based systems combined with a membrane inlet probe [40, 43–48]. Other groups have developed portable MIMS systems [49, 50] focusing on the development of portable quadrupole mass filters coupled with membrane inlet sampling for the direct *in-situ* analysis of a wide range of volatile organic compounds (VOCs) and semi-VOCs in both gaseous and aqueous phase [49, 51–55]. Most recently a series of VOCs have been used to encapsulate and modulate data using a portable MS coupled with a direct inlet membrane probe with high sensitivity [56].

In-situ analytical methods have several important applications in the food, fragrance industry, quality control and personal hygiene [1, 57]. Here, a small footprint portable mass spectrometer combined with a direct inlet membrane (DIM) probe represents a novel method for on-site and online monitoring of flavors and fragrances [6, 58].

2. Experimental Section

2.1. Chemicals and Reagents. Organic methanol solvent, (HPLC grade, 99.8%), reference standard model compounds were of analytical grade (3-methylbutyl acetate, 2-methyl-3-furanthiol, methyl butoate, and ethyl methyl sulfide) with similar chemical properties (i.e. aldehydes and esters) as the active compounds used in most flavors and fragrance products, were purchased from Sigma-Aldrich Corporation, (UK) and used without any further purification. All chemicals were neat liquids and were stored at room temperatures prior to their use. A reference artificial standard mixture was prepared using methanol as a solvent at a concentration of 100 $\mu\text{g}/\text{mL}$ for each model standard compound. The essential fragrant

oils (i.e., tangerine, papaya, banana, and blue berry muffin) samples were bought from Mystic Moments, Hampshire UK (www.mysticmomentsuk.com), and used as supplied without any purification.

2.2. Sample Preparation. Standard model compounds were dissolved in methanol solvent (HPLC grade) to make a stock solution at 1000 ppm. Working solutions were prepared by serial dilution with methanol. An artificial mixture consisting of each of the model compounds at 100 ppb concentration was prepared so that approximately the same ion abundances might be recorded. From each solution, approx. 5 μL was deposited in a flask (1300 mL) obtained from Sigma-Aldrich UK and then analyzed using a portable mass spectrometer system combined with a DIM probe system as shown in Figure 1. The essential fragrant oil mixtures (i.e., tangerine, papaya, banana, and blue berry muffin) were used as supplied without any modification or pre-concentration. In this case, the headspace vapors emitted from the bottles with the essential fragrant oils (10 mL) were exposed in close proximity to the DIM probe for 2 minutes in the open air.

2.3. Portable Mass Spectrometer. Experiments were performed using a portable quadrupole mass spectrometer system (Q-Technologies Ltd., UK), tuned for the optimum continuous detection of the analyte(s) of interest. The main components of the portable mass spectrometer are as follows: a triple filter quadrupole mass spectrometer (consisting of an electron ionization (EI) ion source, mass analyzer, and detector, a vacuum system, an electronics control unit (ECU), and a laptop computer. The mass analyzer is made up of 25 mm rf only prefilter ((Q1) rf only) followed by 125 mm main dc/rf quadrupole mass filter (Q2) and a 25 mm small rf only post filter (Q3) all arranged in series (Figure 1). The portable mass spectrometer has a mass range of m/z 1–200 Da with 1 unit mass resolution. The used portable mass spectrometer employs two different types of detectors: (a) a Faraday cup and (b) a Channeltron type electron multiplier. The portable mass spectrometry system is enclosed in a stainless steel chamber pumped down by a TURBOLAB 80 vacuum system obtained (Oerlikon Leybold Vacuum Ltd., Chessington, UK). The TURBOLAB 80 consists of an Oerlikon dual-stage oil-free DIVAC 0.8 T diaphragm pump and a TURBOVAC SL 80 H turbo molecular pump. The overall system pressure was continuously monitored using a digital pressure gauge (model MRT 100) from Pfeiffer Vacuum Ltd. (Newport Pagnell, UK) that uses a Pirani-Cold cathode method of measurement. Total base pressure of the system when the sample inlet valve is fully closed is 2.5×10^{-8} Torr. Operating pressure during experiments with the sample valve fully open and the membrane sampling probe attached was stable between 3.0×10^{-6} Torr and 4.0×10^{-6} Torr. All components of the portable mass spectrometer are housed within a stainless steel vacuum chamber weighing less than 20 kg. Data was acquired using a laptop running Windows 7 operating system and data interpretation was performed using the NIST14 mass spectral library. Multiple ion monitoring mode was used to continuously select characteristic mass fragments for the chemical analyte(s) of interest.

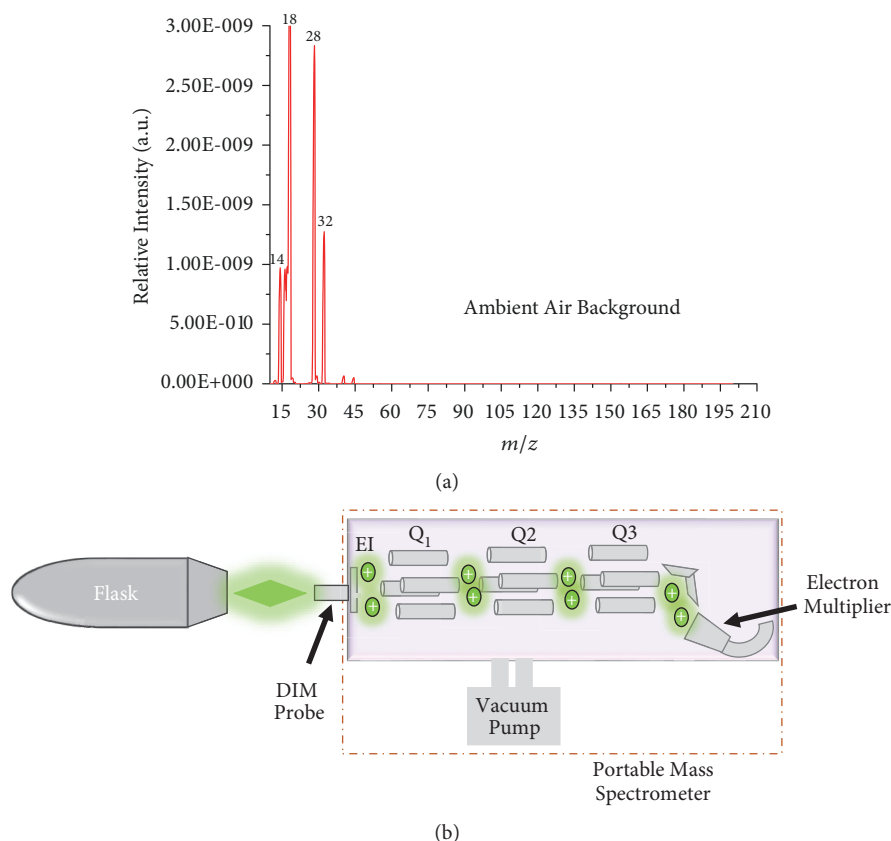


FIGURE 1: Experimental setup used in the detection of different fragrance formulations using a portable quadrupole mass spectrometer coupled with the a direct membrane (DIM) probe; (a) shows the mass spectra obtained for ambient air background without any sample in the flask and (b) the schematic of the portable mass spectrometer coupled to a DIM probe with a flask placed in front of the probe.

A DIM interface probe was used for preconcentrating and introducing analyte(s) from vapor phase samples in real time through pervaporation [22, 59]. The membrane used was a thin fine non-sterile flat polydimethylsiloxane (PDMS) (Technical Products, Inc. of Georgia, USA) with thickness of 0.12 mm and sampling area of 33.2 mm². The membrane was supported by a 0.8 mm thick stainless steel porous frit with 10 μm porosity. The operation of the DIM probe is shown in Figure 1(b). Exposure of sample to the membrane was achieved by placing an open flask with 5 μL of the sample deposited ~ 2 mm away from the DIM probe. The headspace vapor of the analyte(s) molecules pervaporates through the membrane into the quadrupole mass filter (QMF) under ambient conditions in the open environment. The pervaporated molecules are ionized by electron impact ionization. The distance between the membrane and the (EI) source is 50 mm. Ions are generated from an electron filament biased at 1.6 mA electron emission current and electron energy at 65 eV. The manifold remains closed at all times to maintain a constant pressure. The total response of characteristic ions from the analyte(s) of interest was reconstructed from the total ion current of a full scan mass spectrum in the chromatograph mode. Depending on the analyte(s) being studied the duty cycle of the entire analysis process ranged from 30 to 60 seconds.

The analytical performance of the portable mass spectrometer with a direct inlet membrane (DIM) probe combined was carried out using a static dilution procedure [60, 61]. Liquid stock solutions of 10 mL screw vials (Agilent Technologies LDA UK Ltd) of model standards were prepared in methanol at varying concentrations (250, 500, 1000, and 5000 and 10000 ppb). Approximately 5 μL of each standard were pipetted in 1.3 mL narrow-neck glass flasks (Sigma Aldrich Co. LLC., UK). The glass flasks were carefully lidded with wrapping film (parafilm) to eliminate sample loss. A 3-hour phase of incubation at room temperature (~23°C) was followed to allow complete evaporation of the sample analyte(s) and generation of the gas standards. The glass flasks were carefully cleaned prior to the above process with water, soap, and then deionized water (ReAgent Chemical Services Ltd, Cheshire, UK). The generated gaseous standards were tested using the experiment setup in Figure 1. The mass spectra of the analyte(s) were recorded from the lowest to the highest concentration to avoid possible memory effects.

3. Results and Discussion

Results obtained show that the DIM probe combined with a portable experiment retains the advantages of high sensitivity and specificity typical of traditional MS measurements, plus

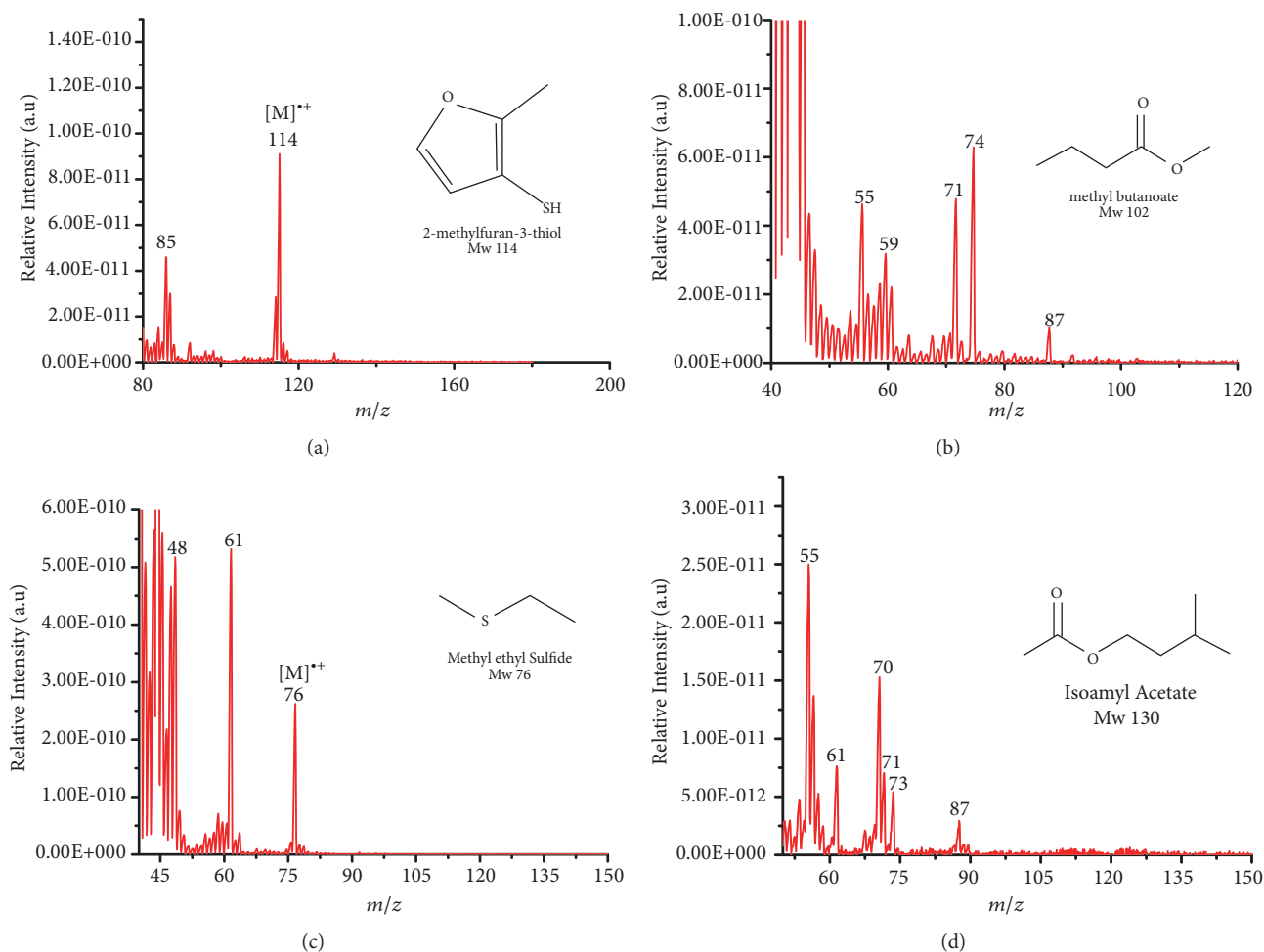


FIGURE 2: Representative EI mass spectra of fragrant model compounds recorded using a DIM probe combined with a portable mass spectrometer. Accurate amounts of analyte were pitted into a flask and introduced into the manifold of the portable MS through a DIM probe, 5 μ L, viz 10 ppb. (a) 2-methylfuran-3-thiol (Mw 114), (b) methyl butanoate (Mw 102), (c) ethyl methyl sulfide (Mw 76), and (d) 3-methylbutyl acetate (Mw 130).

short analysis time (< 1 minute) with no sample pretreatment. Low limits of detection (LOD) of 2.5 pg (absolute concentration) and acceptable reproducibility (RSD of < 10 %) in a variety of untreated, complex essential fragrant oil (i.e., tangerine, papaya, banana, and blue berry muffin) samples were achieved. The strength of the used portable mass spectrometer lies not only in the small size and low weight for in field analysis but also in its ability to be used with a wide range of other mass spectrometry sample inlet methods beyond the DIM probe used in this study [62].

We chose to study different fragrant compounds such as 3-methylbutyl acetate (MW 130), methyl butanoate (MW 102), ethyl methyl sulfide (MW 76), and 2-Methyl-3-furanthiol (MW 114) because they are commonly used as precursors or active ingredients on a large scale in the composition of many flavors and fragrant commercial products due to their intense and pleasant aromatic smell with low toxicity [63, 64]. As such their detection and quantification is vital to ensure high quality production of consumer products in both food and cosmetic industries

[65] and aromatherapy treatment [66]. In addition, there is the need to monitor the authenticity and level of additives to combat fragrance product adulteration [67–69]. Before any sample was analyzed, the direct membrane inlet probe with a portable mass spectrometer was first characterized by recording the background mass spectrum of an empty clean flask (i.e., without any sample) as shown in Figure 1. The recorded background mass spectra show highly intense peaks at m/z 18, 28, and 32 for water clusters, nitrogen, and oxygen ions, respectively. The analyte(s) were introduced into the vacuum manifold of the portable mass spectrometer through pervaporation using a DIM probe (PDMS membrane) and ionized by EI, producing spectra which show the main features similar to those of the NIST mass spectra reference library recorded using different instruments [70].

Representative electron impact (EI) mass spectra for 2-methyl-3-furanthiol are shown in Figure 2. An intense molecular radical cation $[M]^{•+}$ peak at m/z 114 of 2-methyl-3-furanthiol with a fragment peak at m/z 85 due to the subsequent neutral loss of $-[CHO]$ or $-[29 \text{ Da}]$ was observed. The

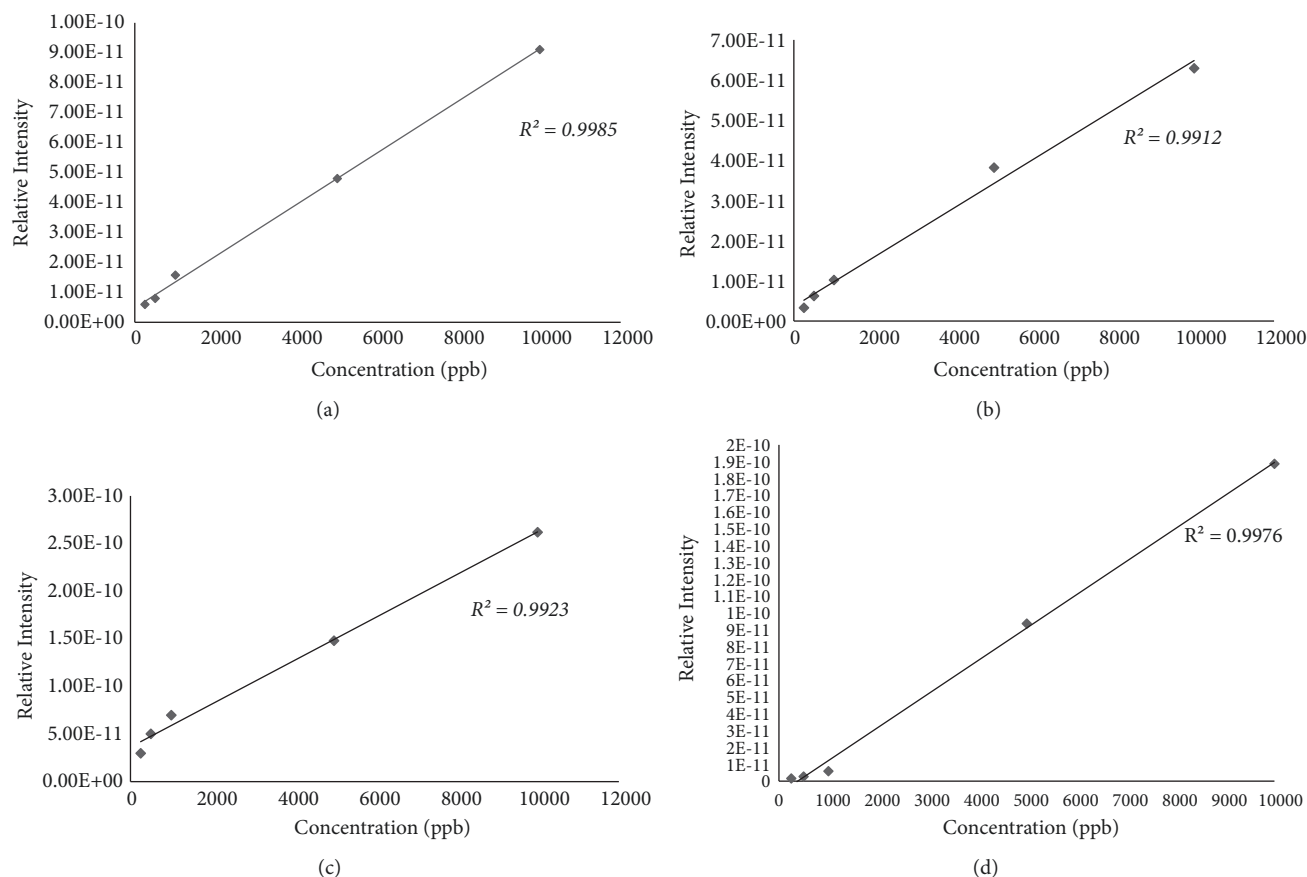


FIGURE 3: Calibration curve for the standard model compounds using various concentration (250 – 10000 ppb) samples of (a) 2-methyl-3-furanthiol (Mw 114), (b) methyl butanoate (Mw 102), (c) ethyl methyl sulfide (Mw 76), and (d) 3-methylbutyl acetate (Mw 130) obtained from the portable mass spectrometer with a DIM probe.

identity of 2-methyl-3-furanthiol was confirmed by comparing the NIST mass spectrum for 2-methyl-3-furanthiol with the mass spectrum obtained using the DIM probe coupled to a portable mass spectrometer system [70]. Figure 2(b) shows the recorded mass spectra obtained for methyl butanoate (MW 102). A less intense fragment peak at m/z 87 due to the methyl neutral loss $-[\text{CH}_3 \text{ or } -15 \text{ Da}]$ followed by a major intense peak at m/z 74 due to McLafferty rearrangement [71] – $[\text{CO} \text{ or } 28 \text{ Da}]$. This is again followed by α -cleavage at m/z 71 due to the loss of $-[\text{CH}_2\text{OH} \text{ or } 31 \text{ Da}]$ further confirming the structure of methyl butanoate (Mw 102). The McLafferty rearrangement observed is as a result of the β -cleavage and the transfer of a γ -hydrogen [72]. The moderate fragment peak at m/z 87 is characteristic of methyl esters which results from γ -cleavage. As such the fragment peaks at m/z 74 and 87 peaks provide definite confirmation that methyl butanoate detected is a straight chain $\text{C}_4\text{-C}_{26}$ methyl ester [72]. Figure 2(c) shows the mass spectrum of ethyl methyl sulfide (MW 76) recorded using a portable mass spectrometer with a direct inlet membrane probe system. An intense molecular cation $[\text{M}]^+$ at m/z 76 followed by an intense fragment peak at m/z 61 due to the neutral loss of methyl radical $-[\text{CH}_3 \text{ or } 15 \text{ Da}]$ was observed. The mass spectrum for 3-methylbutyl acetate (MW 130) (Figure 2(d))

shows no molecular ion with a less intense fragment peak at m/z 87 due to the apparent neutral loss of $-[43 \text{ Da}]$ followed by a highly intense fragment peak at m/z 76 due to the apparent neutral loss of $-[54 \text{ Da}]$. The structure and identity of 3-methylbutyl acetate was confirmed using the mass spectral profile of the standard using the NIST online mass spectra database. The presence of the fragment peak at m/z 87 peak provides definite confirmation that 3-methylbutyl acetate is a straight chain ester [73]. Esters with low molecular weight are commonly used as precursors of different flavors and fragrances due to their low toxicity [63], low polarity, and lower boiling point [9, 69].

The analytical performance was evaluated for all the standard fragrant model compounds studied Figure 3. Figure 3(a) shows the calibration curve for 2-methyl-3-furanthiol, and the system was linear over 4 orders of magnitude (250 to 1000 ppb) with r^2 value of 0.9985, for 60 seconds sample exposure time. The LOD for the standard fragrant model compounds was determined as the concentration that produces a signal more than three times greater than the standard deviation plus the mean value of the blank, in full MS mode. For 2-methyl-3-furanthiol a limit of detection (LOD) of 2.5 pg (Table 1) was obtained when analyzed using DIM probe coupled to a portable mass spectrometer. The

TABLE 1: Limit of detection and rise and fall times for the fragrant compounds analyzed.

Compound	Vapor Pressure (mm Hg at 25°C)	Exposure Time (s)	Ions Monitored (m/z)	^x LOD (ppb)	Rise Time (s)	Fall Time (s)
2-methyl-3-furanthiol	5.78	60	114	8.38	31	46
Methyl butanoate	32	65	74	15.06	23	38
ethyl methyl sulfide	60	60	76	1.68	16	41
3-methylbutyl acetate	5.6	50	70	16.23	15	23

^{xx}Limit of detection (LOD) was calculated as = 3.3(standard error/slope), taken from a calibration curve of five points in the range 250-1000 ppb with three repetitions for each point.

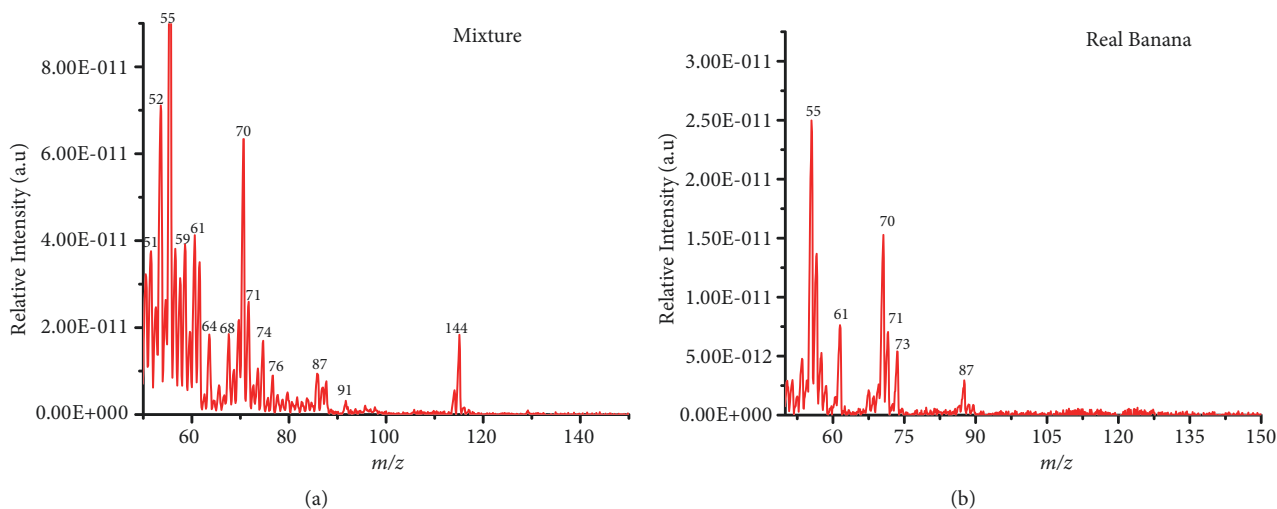


FIGURE 4: In-situ analysis of standard model compounds in an artificial; (a) mixture of equal volumes of 10 ppm of methylbutyl acetate, 2-methyl-3-furanthiol, methyl butanoate, and ethyl methyl sulfide 10 ppm (v/v) using a direct membrane probe coupled to a portable mass spectrometer. Approx. 5 μ L of the mixture was deposited in the flask and left for 2 hours. The headspace vapor of the mixture was detected using a portable mass spectrometer coupled to a direct membrane probe and (b) shows the mass spectrum of the real banana headspace vapor measured using DIM probe with a portable mass spectrometer.

signal intensity ratios of the most abundant fragment peaks were found to be linear in the range from 250-10000 ppb (Figure 3).

Limits of detection (LOD) for the standard fragrant model compounds were also established. Table 1 shows the LOD ($S/N = 3$ in the full scan mass spectrum) and the rise and fall times for fragrant model standards (2-methyl-3-furanthiol, methyl butanoate, ethyl methyl sulfide, and 3-methylbutyl acetate). All the detected model standards gave limits of detection in sub ppb range. The rise and fall time for each compound was also measured, and it was observed that the rise times varied from 15 seconds (3-methylbutyl acetate), 16 seconds (ethyl methyl sulfide), and 23 seconds (methyl butanoate) to 31 seconds (2-methyl-3-furanthiol), and also the fall times varied from 23 s seconds (3-methylbutyl acetate), 38 seconds (methyl butanoate), and 41 seconds (ethyl methyl sulfide) to 46 seconds (2-methyl-3-furanthiol). The duration of the rise and fall times varied depending on the analyte(s) and the difference in the physical properties (vapor pressure at 25°C) at which the analyte(s) pervaporates from the membrane, which is attributed to the difference in volatility and solubility of the analyte(s) through the membrane [27].

3.1. In-Situ Analysis of Fragrant Compounds in a Mixture Analysis. Analysis of fragrant components in complex mixtures was also investigated. For these experiments, an artificial mixture was prepared by mixing equal volumes of the model compounds at 10 ppm v/v (i.e., 3-methylbutyl acetate (Mw 130), methyl butanoate (102), ethyl methyl sulfide MW 76), and 2-methyl-3-furanthiol (114)) and analyzed without any further pretreatment. Approximately 5 μ L of the artificial mixture was deposited into the vacuum flask and analyzed directly. Figures 4(a) and 4(b) shows the recorded mass spectrum for the artificial mixture and the real banana, respectively. An intense radical molecular cation $[M]^+$ peak at m/z 114 of 2-methyl-3-furanthiol and a moderate radical molecular cation $[M]^+$ peak at m/z 76 for ethyl methyl sulfide were observed, while for methylbutyl acetate (Mw 130), two intense fragments at m/z 55 and 76 and methyl butanoate (102) and 55, 71, and 74 fragments observed were similar to those in Figures 2(b) and 2(c).

The ability to detect the individual standard compounds in artificial mixtures encouraged us to apply this experiment to the analysis of the commercial fragrant mixtures using a portable mass spectrometer coupled with DIM probe. For this experiment, 4 essential fragrant oils (i.e., tangerine, papaya,

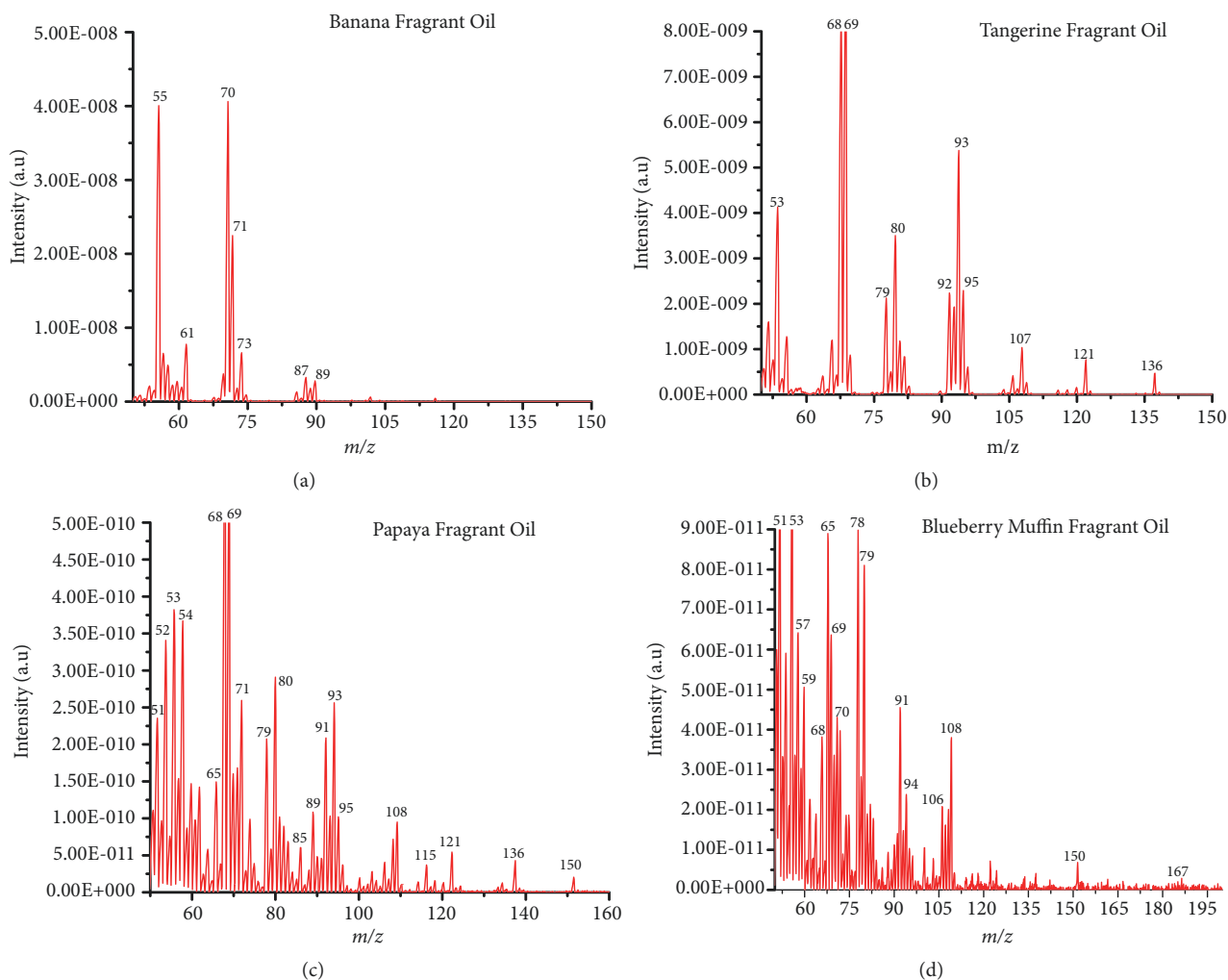


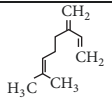
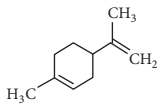
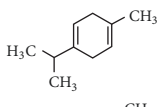
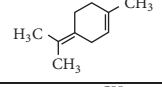
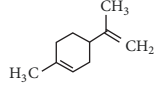
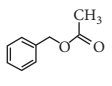
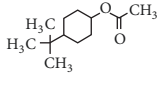
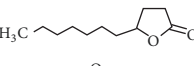
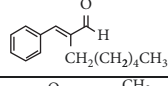
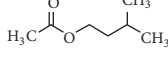
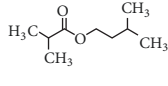
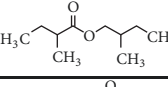
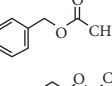
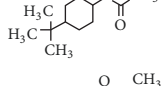
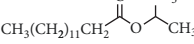
FIGURE 5: Electron impact ionization mass spectrum for essential fragrant oils analyzed using a direct membrane probe coupled to portable mass spectrometer. (a) banana, (b) tangerine, (c) papaya, and (d) blueberry muffin. Approx. 5 μL of each was deposited in the flask and left for 2 hours forming a headspace vapor and analyzed for 2 minutes with 70 eV EI energy.

banana, and blue berry muffin) in their pure form were analyzed with DIM probe combined with a portable mass spectrometer. Figure 5 shows the recorded mass spectra for the fragrant essential oils samples analyzed. A summary of the detected compounds in the essential oil samples (i.e., banana, tangerine, papaya, and blue berry muffin) is shown in Table 2. Again the mass spectra recorded showed typical characteristic fragment peaks at m/z 43, 76, and 87 indicating the presence of esters in the mixture that corresponds to the loss of $-\text{[CHO]}$ or $-\text{[29 Da]}$ methyl neutral loss $-\text{[CH}_3$ or 15 Da] as observed with the single model compounds (Figure 2).

To confirm the molecular structure of the compounds identified, GC-MS analysis for the essential fragrant oil in question was undertaken (for experimental procedure see supporting information). Representative GC-MS total ion chromatograms for the different compounds analyzed (tangerine, papaya, banana, and blueberry muffin) are shown in Figures S1–S4 (supporting information). The chromatogram reports the ion current corresponding to the mass spectra

of compounds that were later confirmed using the NIST reference library matching (Figures S1–S4). Table 2 summarizes the list of compounds identified using the DIM probe with a portable mass spectrometer and confirmed using GC-MS experiments (supporting information). The GC-MS data acquired for complex essential fragrant oil samples provides definite confirmation for the different compounds in the essential fragrant oil samples identified using a DIM coupled to portable mass spectrometer experiment. It is important to note that the portable mass spectrometer has a lower mass range (1–200 Da) than the GC-MS limiting its capacity to analyze high molecular weight compounds (see supporting information for more details). For instance, diethyl phthalate (Mw 222) a well-known lower molecular weight endocrine disruptor was found in all the essential fragrant samples studied but was not detected using the DIM probe with a portable mass spectrometer owing to its lower mass range. However, this was detected in all the tangerine, papaya, and blueberry muffin essential oil samples when analyzed with GC-MS (see supporting information for more details).

TABLE 2: Compounds detected in the essential oil fragrant samples using a DIM probe coupled to a portable mass spectrometer.

Essential Fragrant Oil	Identified compounds	Chemical Structure	Molecular Weight	Ions Detected	Major Product Ions (<i>m/z</i>)
Tangerine	β -Myrcene		136	[M] ⁺	93,79, 69,41
	D-Limonene		136	[M] ⁺	121,107,93,79,68
	γ -Terpinene		136	[M] ⁺	121, 105, 93, 77
	Terpinolene		136	[M] ⁺	121,105,93,91,79,77
Papaya	D-Limonene		136	[M] ⁺	121, 107, 93, 79 68
	Acetic acid, phenylmethyl ester		150	[M] ⁺	108, 91, 79
	4-tert-Butylcyclohexyl acetate		198	n/a	138,123,82,67,57,43
	2(3H)-Furanone, 5-heptyldihydro		184	n/a	85
Banana	Octanal, 2-(phenylmethylene)		216	n/a	145,129, 115, 91
	Isoamyl acetate		130	n/a	87, 70, 55, 43
	Propanoic acid, 2-methyl-, 3-methylbutyl ester		158	n/a	89, 71, 55, 43
Blueberry Muffin	Butanoic acid, 2-methylbutyl ester		172	n/a	71, 55, 43
	Acetic acid, phenylmethyl ester		150	n/a	108, 91, 79, 65, 51
	4-tert-Butylcyclohexyl acetate		198	n/a	138,123,82,67,57,43
	Isopropyl myristate		270	n/a	129, 102,60,57,43

[M]⁺ = Molecular radical cation, n/a = Not available (not detected) using DIM probe with a portable mass spectrometer.

The results obtained show the capability of the portable mass spectrometer for online high-throughput rapid screening of different analyses with no sample preparation. However, the use of electron impact (EI) ionisation complicated the mass spectra of the analyte(s) studied. EI ionisation can generate ions with high internal energies (70 eV), hence in-source fragmentation is common and can complicate the interpretation and identification of the fragrant components in the mixture. To overcome this problem softer ionisation techniques (e.g., chemical ionisation (CI)) or atmospheric pressure chemical ionisation (APCI) or other ambient

ionisation sources forming ions with low internal energies suppressing fragmentation can be used in unison with the portable mass spectrometer [34, 39, 74].

In this study the direct analysis of different fragrant active in complex mixtures has been demonstrated using a DIM probe coupled with a portable mass spectrometer. The results demonstrate rapid analysis allowing high throughput of different essential oil fragrant compounds of importance in the flavor and fragrance industry. The results reported that a DIM probe coupled to a portable mass spectrometer can be incorporated during in the production and the post

production stages of in different flavors in the fragrance industry for quality control.

Quality control in the flavour and fragrance industry has become a global problem. Being a useful analytical tool for in-situ analysis at the source with minimal sample preparation, a DIM probe coupled with a portable mass spectrometer is proposed as the alternative analytical technique to the analysis of flavours and fragrant samples in complex matrixes such as fragrant essential oils. As demonstrated, DIM probe combined with small footprint mass spectrometer is able to detect the active components of different food flavours and fragrant essential oil with high throughput. Linear signal responses with a dynamic range of 5 orders of magnitude were obtained. The limits of detection (LOD) were 2.5 pg (absolute concentration) with good reproducibility (RSD < 10 %). The rise times of 16 to 31 seconds and fall times of 23 to 41 seconds are noteworthy providing a timely and direct analysis of different flavours and fragrances. Future work will involve optimising the membrane parameters to enhanced performance. Because no sample preparation is needed for the analysis, the duty cycle time from ambient air sampling to acquisition of results is 65 seconds or less.

The simplicity and the ability to analyze different flavors and fragrant samples using a direct membrane probe further enhance the potential of using a portable or miniaturized mass spectrometer for online monitoring, during the production and formulation of the flavors and fragrances, and for forensics investigation. Such a system in operation would be of great value in the flavor and fragrant industry for online monitoring and quality control. The data obtained can also be used in aromatherapy or olfactory experiments in a range of environments. Future work will involve the coupling of softer ionisation source operating at atmospheric pressure such as desorption atmospheric pressure chemical ionisation (DAPCI) for a wide range of food flavours.

Data Availability

The data used to support the findings of this study are available from the corresponding author upon request.

Conflicts of Interest

The authors declare that they have no conflicts of interest.

Acknowledgments

This work was supported by the Engineering and Physical Sciences Research Council (EPSRC) under grant agreement: EP/M029425/1 "Creating a Stink – Investigating Olfactory Transport Streams". The authors gratefully acknowledge Professor Graham Cooks from Purdue University for his assistance and support.

Supplementary Materials

The mass spectrum figure(s) data used to support the findings of this study are included within the article. Additional information/data used to support the findings of this study

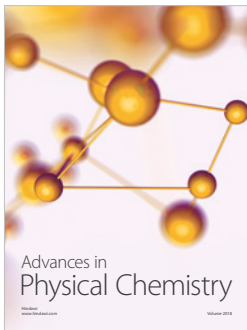
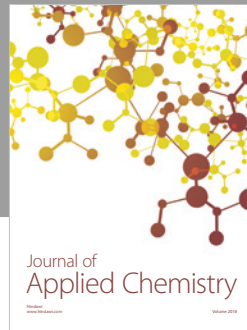
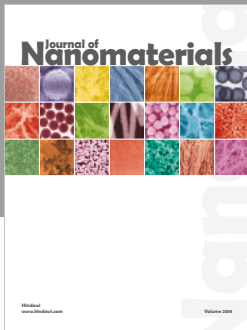
are included within the supplementary information: GC-MS experimental procedure, analysis of Banana fragrant Essentials oil using GC-MS, analysis of Tangerine fragrant essential oil using GC-MS, analysis of papaya fragrant essentials using GC-MS, and analysis of blueberry muffin fragrant essentials using GC-MS. The Supporting Information is available free of charge. (*Supplementary Materials*)

References

- [1] Y. F. Wong and P. J. Marriott, "Approaches and challenges for analysis of flavor and fragrance volatiles," *Journal of Agricultural and Food Chemistry*, vol. 65, no. 34, pp. 7305–7307, 2017.
- [2] K. A. Thompson-Witrick, R. L. Rouseff, K. R. Cadwalader et al., "Comparison of two extraction techniques, solid-phase microextraction versus continuous liquid-liquid extraction/solvent-assisted flavor evaporation, for the analysis of flavor compounds in gueuze lambic beer," *Journal of Food Science*, vol. 80, no. 3, pp. C571–C576, 2015.
- [3] M. Picard, C. Franc, G. de Revel, and S. Marchand, "Dual solid-phase and stir bar sorptive extraction combined with gas chromatography-mass spectrometry analysis provides a suitable tool for assaying limonene-derived mint aroma compounds in red wine," *Analytica Chimica Acta*, vol. 1001, pp. 168–178, 2018.
- [4] P. Q. Tranchida, F. A. Franchina, P. Dugo, and L. Mondello, "Comprehensive two-dimensional gas chromatography-mass spectrometry: recent evolution and current trends," *Mass Spectrometry Reviews*, vol. 35, no. 4, pp. 524–534, 2016.
- [5] S. Dötterl and A. Jürgens, "Spatial fragrance patterns in flowers of *Silene latifolia*: lilac compounds as olfactory nectar guides?" *Plant Systematics and Evolution*, vol. 255, no. 1-2, pp. 99–109, 2005.
- [6] S. Maher, F. P. Jjunju, and S. Taylor, "Colloquium : 100 years of mass spectrometry: Perspectives and future trends," *Reviews of Modern Physics*, vol. 87, no. 1, pp. 113–135, 2015.
- [7] K. H. C. Baser and G. Buchbauer, *Handbook of Essential Oils: Science, Technology, and Applications*, CRC Press, 2015.
- [8] J. Wang, Y. Hang, T. Yan et al., "Qualitative analysis of flavors and fragrances added to tea by using GC-MS," *Journal of Separation Science*, vol. 41, no. 3, pp. 648–656, 2018.
- [9] R. Xiao, X. Zhang, X. Zhang et al., "Analysis of flavors and fragrances by HPLC with Fe₃O₄@GO magnetic nanocomposite as the adsorbent," *Talanta*, vol. 166, pp. 262–267, 2017.
- [10] N. S. Kim and D. S. Lee, "Comparison of different extraction methods for the analysis of fragrances from *Lavandula* species by gas chromatography-mass spectrometry," *Journal of Chromatography A*, vol. 982, no. 1, pp. 31–47, 2002.
- [11] R. J. Bell, R. T. Short, F. H. W. Van Amerom, and R. H. Byrne, "Calibration of an in situ membrane inlet mass spectrometer for measurements of dissolved gases and volatile organics in seawater," *Environmental Science & Technology*, vol. 41, no. 23, pp. 8123–8128, 2007.
- [12] F. Jjunju, *In-Situ Mass Spectrometry Analysis under Ambient Conditions*, Diss. University of Liverpool, 2016.
- [13] F. P. M. Jjunju, S. Maher, A. Li et al., "Hand-held portable desorption atmospheric pressure chemical ionization ion source for in situ analysis of nitroaromatic explosives," *Analytical Chemistry*, vol. 87, no. 19, pp. 10047–10055, 2015.
- [14] F. P. M. Jjunju, S. Maher, A. Li, A. K. Badu-Tawiah, S. Taylor, and R. Graham Cooks, "Analysis of polycyclic aromatic

- hydrocarbons using desorption atmospheric pressure chemical ionization coupled to a portable mass spectrometer," *Journal of The American Society for Mass Spectrometry*, vol. 26, no. 2, pp. 271–280, 2015.
- [15] F. P. M. Jjunju, A. Li, A. Badu-Tawiah et al., "In situ analysis of corrosion inhibitors using a portable mass spectrometer with paper spray ionization," *Analyst*, vol. 138, no. 13, pp. 3740–3748, 2013.
- [16] D. E. Damon, Y. S. Maher, M. Yin et al., "2D wax-printed paper substrates with extended solvent supply capabilities allow enhanced ion signal in paper spray ionization," *Analyst*, vol. 141, no. 12, pp. 3866–3873, 2016.
- [17] F. P. M. Jjunju, S. Maher, D. E. Damon et al., "Screening and quantification of aliphatic primary alkyl corrosion inhibitor amines in water samples by paper spray mass spectrometry," *Analytical Chemistry*, vol. 88, no. 2, pp. 1391–1400, 2016.
- [18] A. Ray, T. Bristow, C. Whitmore, and J. Mosely, "On-line reaction monitoring by mass spectrometry, modern approaches for the analysis of chemical reactions," *Mass Spectrometry Reviews*, vol. 37, no. 4, pp. 565–579, 2017.
- [19] S. D. Richardson and T. A. Ternes, "Water analysis: emerging contaminants and current issues," *Analytical Chemistry*, vol. 90.1, pp. 398–428, 2017.
- [20] S. Giannoukos, B. Brkić, S. Taylor, A. Marshall, and G. F. Verbeck, "Chemical sniffing instrumentation for security applications," *Chemical Reviews*, vol. 116, no. 14, pp. 8146–8172, 2016.
- [21] D. B. Trimarco, S. B. Scott, A. H. Thilsted et al., "Enabling real-time detection of electrochemical desorption phenomena with sub-monolayer sensitivity," *Electrochimica Acta*, vol. 268, pp. 520–530, 2018.
- [22] M. E. Cisper, C. G. Gill, L. E. Townsend, and P. H. Hemberger, "On-line detection of volatile organic compounds in air at parts-per-trillion levels by membrane introduction mass spectrometry," *Analytical Chemistry*, vol. 67, no. 8, pp. 1413–1417, 1995.
- [23] G. W. Vandergrift, E. T. Krogh, and C. G. Gill, "Polymer inclusion membranes with condensed phase membrane introduction mass spectrometry (CP-MIMS): improved analytical response time and sensitivity," *Analytical Chemistry*, vol. 89, no. 10, pp. 5629–5636, 2017.
- [24] S. Maher, F. Jjunju, I. Young, B. Brkic, and S. Taylor, "Membrane inlet mass spectrometry for in situ environmental monitoring," *Spectrosc. Europe*, vol. 26, no. 2, pp. 6–8, 2014.
- [25] X. Xu, *Glow Discharge Mass Spectrometric Determination of Selected Biological Species*, West Virginia University, 2017.
- [26] N. G. Davey, E. T. Krogh, and C. G. Gill, "Membrane-introduction mass spectrometry (MIMS)," *TrAC - Trends in Analytical Chemistry*, vol. 30, no. 9, pp. 1477–1485, 2011.
- [27] M. A. Angelstad, E. T. Krogh, G. R. Agnes, and C. G. Gill, "Online measurement of phthalate–particulate matter interactions by membrane introduction mass spectrometry (MIMS)," *Journal of Environmental Science and Health Part A*, vol. 53, no. 8, pp. 1–6, 2018.
- [28] S. Gerbig, S. Neese, A. Penner, B. Spengler, and S. Schulz, "Real-time food authentication using a miniature mass spectrometer," *Analytical Chemistry*, vol. 89, no. 20, pp. 10717–10725, 2017.
- [29] P. W. Fedick, W. L. Fatigante, Z. E. Lawton et al., "A low-cost, simplified platform of interchangeable, ambient ionization sources for rapid, forensic evidence screening on portable mass spectrometric instrumentation," *Mass Spectrometry Based Miniature Instruments for Environmental and Field Studies*, vol. 2, no. 5, 2018.
- [30] Z. E. Lawton, A. Traub, W. L. Fatigante et al., "Analytical validation of a portable mass spectrometer featuring interchangeable, ambient ionization sources for high throughput forensic evidence screening," *Journal of The American Society for Mass Spectrometry*, vol. 28, no. 6, pp. 1048–1059, 2017.
- [31] A. M. Bruno, S. R. Cleary, A. E. O'Leary, M. C. Gizzi, and C. C. Mulligan, "Balancing the utility and legality of implementing portable mass spectrometers coupled with ambient ionization in routine law enforcement activities," *Analytical Methods*, vol. 9, no. 34, pp. 5015–5022, 2017.
- [32] S. E. Hall, O.A. E. Leary, Z. E. Lawton, A. M. Bruno, and C. C. Mulligan, "Trace level screening of chemicals related to clandestine desomorphine production with ambient sampling, portable mass spectrometry," *Journal of Chemistry*, vol. 2017, Article ID 8571928, 7 pages, 2017.
- [33] A. E. O'Leary, H. Oberacher, S. E. Hall, and C. C. Mulligan, "Combining a portable, tandem mass spectrometer with automated library searching—an important step towards streamlined, on-site identification of forensic evidence," *Analytical Methods*, vol. 7, no. 8, pp. 3331–3339, 2015.
- [34] X. Guo, H. Bai, Y. Lv et al., "Rapid identification of regulated organic chemical compounds in toys using ambient ionization and a miniature mass spectrometry system," *Talanta*, vol. 180, pp. 182–192, 2018.
- [35] C. J. Pulliam, P. Wei, D. T. Snyder et al., "Rapid discrimination of bacteria using a miniature mass spectrometer," *Analyst*, vol. 141, no. 5, pp. 1633–1636, 2016.
- [36] P. Mochalski, H. Wiesenhofer, M. Allers et al., "Monitoring of selected skin- and breath-borne volatile organic compounds emitted from the human body using gas chromatography ion mobility spectrometry (GC-IMS)," *Journal of Chromatography B*, vol. 1076, pp. 29–34, 2018.
- [37] S. Giannoukos, A. Agapiou, and S. Taylor, "Advances in chemical sensing technologies for VOCs in breath for security/threat assessment, illicit drug detection, and human trafficking activity," *Journal of Breath Research*, vol. 12, no. 2, Article ID 027106, 2018.
- [38] A. T. Güntner, N. J. Pineau, P. Mochalski et al., "Sniffing entrapped humans with sensor arrays," *Analytical Chemistry*, vol. 90, no. 8, pp. 4940–4945, 2018.
- [39] W. Zhang, X. Wang, Y. Xia, and Z. Ouyang, "Ambient ionization and miniature mass spectrometry systems for disease diagnosis and therapeutic monitoring," *Theranostics*, vol. 7, no. 12, pp. 2968–2981, 2017.
- [40] Z. Ouyang and R. G. Cooks, "Miniature mass spectrometers," *Annual Review of Analytical Chemistry*, vol. 2, pp. 187–214, 2009.
- [41] A. Malcolm, S. Wright, R. R. A. Syms, N. Dash, M.-A. Schwab, and A. Finlay, "Miniature mass spectrometer systems based on a microengineered quadrupole filter," *Analytical Chemistry*, vol. 82, no. 5, pp. 1751–1758, 2010.
- [42] A. E. O'Leary, S. E. Hall, K. E. Vircks, and C. C. Mulligan, "Monitoring the clandestine synthesis of methamphetamine in real-time with ambient sampling, portable mass spectrometry," *Analytical Methods*, vol. 7, no. 17, pp. 7156–7163, 2015.
- [43] D. L. Browne, S. Wright, B. J. Deadman et al., "Continuous flow reaction monitoring using an on-line miniature mass spectrometer," *Rapid Communications in Mass Spectrometry*, vol. 26, no. 17, pp. 1999–2010, 2012.
- [44] L. Li, T.-C. Chen, Y. Ren, P. I. Hendricks, R. G. Cooks, and Z. Ouyang, "Mini 12, miniature mass spectrometer for clinical and other applications - Introduction and characterization," *Analytical Chemistry*, vol. 86, no. 6, pp. 2909–2916, 2014.

- [45] B. C. Laughlin, C. C. Mulligan, and R. G. Cooks, "Atmospheric pressure ionization in a miniature mass spectrometer," *Analytical Chemistry*, vol. 77, no. 9, pp. 2928–2939, 2005.
- [46] J. N. Smith, R. J. Noll, and R. G. Cooks, "Facility monitoring of chemical warfare agent simulants in air using an automated, field-deployable, miniature mass spectrometer," *Rapid Communications in Mass Spectrometry*, vol. 25, no. 10, pp. 1437–1444, 2011.
- [47] P. I. Hendricks, J. K. Dalgleish, J. T. Shelley et al., "Autonomous in situ analysis and real-time chemical detection using a backpack miniature mass spectrometer: concept, instrumentation development, and performance," *Analytical chemistry*, vol. 86, no. 6, pp. 2900–2908, 2014.
- [48] N. L. Sanders, S. Kothari, G. Huang, G. Salazar, and R. G. Cooks, "Detection of explosives as negative ions directly from surfaces using a miniature mass spectrometer," *Analytical Chemistry*, vol. 82, no. 12, pp. 5313–5316, 2010.
- [49] P. M. Mach, E. M. McBride, Z. J. Sasiene et al., "Vehicle-mounted portable mass spectrometry system for the covert detection via spatial analysis of clandestine methamphetamine laboratories," *Analytical Chemistry*, vol. 87, no. 22, pp. 11501–11508, 2015.
- [50] P. M. Mach, C. W. Kenneth, and G. F. JASMS, "Development of multi-membrane near-infrared diode mass spectrometer for field analysis of aromatic hydrocarbons," *Journal of The American Society for Mass Spectrometry*, vol. 26, no. 2, pp. 281–285, 2015.
- [51] Z. L. Hildenbrand, P. M. Mach, E. M. McBride et al., "Point source attribution of ambient contamination events near unconventional oil and gas development," *Science of the Total Environment*, vol. 573, pp. 382–388, 2016.
- [52] K. C. Wright and G. F. Verbeck IV, Chemical analyzer with membrane. U.S. Patent Application, INFICON Inc, 15/882,173, 2018.
- [53] Z. L. Hildenbrand, D. D. Carlton, B. E. Fontenot et al., "Temporal variation in groundwater quality in the Permian Basin of Texas, a region of increasing unconventional oil and gas development," *Science of the Total Environment*, vol. 562, pp. 906–913, 2016.
- [54] P. M. Mach, K. C. Wright, and G. F. Verbeck, "Development of multi-membrane near-infrared diode mass spectrometer for field analysis of aromatic hydrocarbons," *Journal of The American Society for Mass Spectrometry*, vol. 26, no. 2, pp. 281–285, 2015.
- [55] B. Dubansky, G. Verbeck, P. Mach, and W. Burggren, "Methodology for exposing avian embryos to quantified levels of airborne aromatic compounds associated with crude oil spills," *Environmental Toxicology and Pharmacology*, vol. 58, pp. 163–169, 2018.
- [56] S. Giannoukos, A. Marshall, S. Taylor, and J. Smith, "Molecular Communication over Gas Stream Channels using Portable Mass Spectrometry," *Journal of The American Society for Mass Spectrometry*, vol. 28, no. 11, pp. 2371–2383, 2017.
- [57] A. P. Wicker, Z. L. Hildenbrand, and K. A. Schug, "Best management practices from the "responsible shale energy extraction" conference: guiding industry in environmental stewardship," in *Environmental Issues Concerning Hydraulic Fracturing*, vol. 1 of *Advances in Chemical Pollution, Environmental Management and Protection*, pp. 381–405, Elsevier, 2017.
- [58] D. T. Snyder, C. J. Pulliam, Z. Ouyang, and R. G. Cooks, "Miniature and fieldable mass spectrometers: recent advances," *Analytical Chemistry*, vol. 88, no. 1, pp. 2–29, 2016.
- [59] M. A. LaPack, J. C. Tou, and C. G. Enke, "Membrane Mass Spectrometry for the Direct Trace Analysis of Volatile Organic Compounds in Air and Water," *Analytical Chemistry*, vol. 62, no. 13, pp. 1265–1271, 1990.
- [60] W. H. McClennen, C. L. Vaughn, P. A. Cole et al., "Roving GC/MS: Mapping VOC gradients and trends in space and time," *Field Analytical Chemistry and Technology*, vol. 1, no. 2, pp. 109–116, 1996.
- [61] A. Naganowska-Nowak, P. Konieczka, A. Przyjazny, and J. Namieśnik, "Development of techniques of generation of gaseous standard mixtures," *Critical Reviews in Analytical Chemistry*, vol. 35, no. 1, pp. 31–55, 2005.
- [62] S. C. Fraga, M. Monteleone, M. Lanč et al., "A novel time lag method for the analysis of mixed gas diffusion in polymeric membranes by on-line mass spectrometry: Method development and validation," *Journal of Membrane Science*, vol. 561, pp. 39–58, 2018.
- [63] A. G. A. SÁ, A. C. de Meneses, P. H. H. de Araújo, and D. de Oliveira, "A review on enzymatic synthesis of aromatic esters used as flavor ingredients for food, cosmetics and pharmaceuticals industries," *Trends in Food Science & Technology/Trends in Food Science & Technology Part A*, vol. 69, pp. 95–105, 2017.
- [64] H. Surburg and J. Panten, *Common Fragrance and Flavor Materials: Preparation, Properties and Uses*, John Wiley & Sons, 2016.
- [65] R. Ribeiro-Santos, M. Andrade, N. R. de Melo, and A. Sanches-Silva, "Use of essential oils in active food packaging: Recent advances and future trends," *Trends in food science technology*, vol. 61, pp. 132–140, 2017.
- [66] M. Guentert, "The flavour and fragrance industry-past, present, and future," in *Flavours and Fragrances: Chemistry, Bioprocessing and Sustainability*, pp. 1–14, 2007.
- [67] A. Gliszczyńska-Świgło and J. Chmielewski, "Electronic Nose as a Tool for Monitoring the Authenticity of Food. A Review," *Food Analytical Methods*, vol. 10, no. 6, pp. 1800–1816, 2017.
- [68] G. P. Danezis, A. S. Tsagkaris, F. Camin, V. Brusica, and C. A. Georgiou, "Food authentication: techniques, trends & emerging approaches," *TrAC - Trends in Analytical Chemistry*, vol. 85, pp. 123–132, 2016.
- [69] M. Peris and L. Escuder-Gilabert, "Electronic noses and tongues to assess food authenticity and adulteration," *Trends in Food Science & Technology*, vol. 58, pp. 40–54, 2016.
- [70] C. I. Watson, "NIST Special Standard Reference Database 24. NIST Digital Video of Live-Scan Fingerprint Database (No. World Wide Web-Internet and Web Information Systems). 2016".
- [71] F. W. McLafferty, "Mass spectrometric analysis: Molecular rearrangements," *Analytical Chemistry*, vol. 31, no. 1, pp. 82–87, 1959.
- [72] R. M. Silverstein, F. X. Webster, D. J. Kiemle, and D. L. Bryce, *Spectrometric Identification of Organic Compounds*, John Wiley & Sons, 2014.
- [73] G. Knothe, "A comprehensive evaluation of the cetane numbers of fatty acid methyl esters," *Fuel*, vol. 119, pp. 6–13, 2014.
- [74] C. Zhang, T. Glaros, and N. E. Manicke, "Targeted Protein Detection Using an All-in-One Mass Spectrometry Cartridge," *Journal of the American Chemical Society*, vol. 139, no. 32, pp. 10996–10999, 2017.



Hindawi

Submit your manuscripts at
www.hindawi.com

The central advertisement features the Hindawi logo, which consists of two interlocking loops, one blue and one green. Below the logo is the Hindawi name and the submission information.

