



A Comprehensive Review on – *Acalypha indica* Linn.

**M. Surendra Kumar^{a*}, S. Bhuvaneshwari^a, M. Santhoshkumar^a, A. Arunesh^a,
M. Mohamed Ameen^a, K. Sathiyapriya^a and N. Astalakshmi^a**

^a Senghundhar College of Pharmacy, Tiruchengode, Tamil Nadu, India.

Authors' contributions

This work was carried out in collaboration among all authors. All authors read and approved the final manuscript.

Article Information

DOI: 10.9734/JPRI/2021/v33i60B34787

Open Peer Review History:

This journal follows the Advanced Open Peer Review policy. Identity of the Reviewers, Editor(s) and additional Reviewers, peer review comments, different versions of the manuscript, comments of the editors, etc are available here: <https://www.sdiarticle5.com/review-history/81632>

Review Article

Received 15 October 2021
Accepted 20 December 2021
Published 23 December 2021

ABSTRACT

Medicinal plants possess high therapeutic values. It can act as remedies for various human diseases and ailments. *Acalypha indica* is an herbaceous annual plant which belongs to the family euphorbiaceae. Euphorbiaceae is a large family of flowering plants. The Euphorbiaceae consist of monoecious or dioecious, herbs, shrubs, vines, or trees. Latex is present in some major groups. *Acalypha indica* commonly called as kuppaimeni. It is mostly found in the backyards of houses and waste places throughout the India. This herb has wide range of therapeutic purposes and have nutritional properties. The plant widely used to treat various diseases like antibacterial, antifungal, acaricidal effects etc. This review article provides an insight into wide-range of information on the phytochemistry and pharmacological aspects of this species.

Keywords: Medicinal plants; *Acalypha indica*; phytochemistry and pharmacological aspects.

1. INTRODUCTION

Acalypha indica Linn., is a weed plant which contain important medicinal values for human health remedies. It can be found commonly in India, Srilanka, Thailand and Pakistan [1]. It can

grow up-to 0.6m to 0.75m [2]. It is commonly known as Indian copper leaf. The plant is rich in secondary metabolites such as terpenoids, tannins, alkaloids, flavonoids [3]. The plants root, leaf, flower and stem parts possess antibacterial, antifungal properties and to use to treat various

*Corresponding author: E-mail: skshravansk@gmail.com;

diseases and disorders [4]. This present review focuses on pharmacognostical and pharmacological properties of the plant *Acalypha indica* Linn.

Tamil: Kuppivaeni, kuppaimeni.
Telugu: Kuppichettu, harita-manjiri, kuppinta, muripindi

2. PLANT PROFILE

Scientific name: *Acalypha indica* Linn.



Fig. 1. *Acalypha indica* Linn. [5]



Fig. 2. *Acalypha indica* flowers [6]

3. TAXONOMICAL CLASSIFICATION

Kingdom: Plantae
Superdivision: Embryophyta
Division: Tracheophyta
Subdivision: Spermatophytina
Class: Magnoliopsida
Superorder: Rosanae
Order: Malpighiales
Family: Euphorbiaceae
Genus: *Acalypha*
Species: *A. Indica*

4. Vernacular names

Bengali: Mukтажhuri steva-basanta
Hindi: Kuppikhokslī, kuppu, khokali.
Kannada: Kuppigida
Malayalam: Kuppamēni
Sanskrit: Haritamanjari

5. DISTRIBUTION

Acalypha indica grows obviously in wet conditions, temperate and tropical areas along the equator cross continental of Asia, Africa, Europe, South and North America and Australia [7]. The Indian people have the most documented records of plant use for their traditional medicines [8]. It is also seen in the Arabia Gulf region [9]. The plant shows high level of distribution in the regions of African regions such as Ethiopia, Sudan, DR Congo, South Africa, Somalia, Kenya and Zambia [10].

6. HABITAT

It is found in various places such as waste lands, road sides, gaps in walls. It also grows in rocky hillsides, forest edges and river banks. It also grows at moist and shaded places. It can grow from sea-level up to 1350m altitude [11].

7. BOTANICAL DESCRIPTION

Acalypha indica is a traditional medicinal plant, well known by old generations in many countries like Asia and Africa [12]. The plant is mostly found in wet, tropical and courtyards of houses. It grows as a weed, in bushes along roadsides, and in other places [13]. Because this plant has a direct association with Siddha and Ayurveda therapeutic techniques followed by older generations of people, many international articles on *Acalypha indica* have been published in Indian journals [14].

7.1 Leaves

The leaves are acute or sub obtuse to crenate – serrate, glabrous thin and the base are found to be cuneate. Their petioles are usually longer than the blade, slender and stipulate minute [15]. The leaves of *Acalypha indica* are simple and are arranged spirally, 0.02 – 12cm petiole long.

7.2 Flower

Flowers are elongated in nature, auxiliary spikes and are clusters near to spikes. The female flower is white and is encircled by a short stalked large leafy dentate cuneiform with many nerves bract and a short pedunculate large leafy dentate

cuneiform with many nerves bract that is 6 to 8mm in diameter. Flowers are unisexual, sessile, and lack petals; male flowers are 4-lobed, minute, granular dotted, calyx greenish, and stamens 8; female flowers have 3 triangular-ovate, ciliate sepals, superior ovary, 3-celled, slightly 3-lobed, styles 3, fused at base, and fringed [16].

7.3 Fruits

The fruits of the *Acalypha indica* are smaller and hairy. Capsule is bristly, 1mm broad [17].

7.4 Seeds

The seeds are minute, ovoid, and pale brown in appearance. Depending on its maturity, the colour of the seed will shift from greenish white to entirely brownish or grey in the early phases of seed production [18].

The inflorescences are in axillary, solitary or paired spike reaching up to 6 –10cm

8. TRADITIONAL USES OF *Acalypha indica* LINN.

8.1 leaves

Leaves are used as antibacterial, wound healing and decoction of leaves is used for dysentery. The Leaf infusion is consumed as purgative. The leaves in decoction and in powder form are used as laxative. In burning lesions, a leaf paste is administered [19].

8.2 Roots

Roots are used for the treatment of fever, intestinal worms, diabetes and stomach ache. Roots are used as abortifacient, cathartic, demulcent and anti-inflammatory [20].

8.3 Seeds

Seeds are used to treat diarrhoea, asthma and bronchitis and it is a natural diuretic agent [21].

9. COMMON USES

It has also been reported to be useful in treating pneumoniae, asthma, rheumatism and several other ailments. The plant is commonly used for dyeing purpose [22]. The plant is also used as expectorant, antivenom, wound healing,

antioxidant, diuretic and treatment of infertility, Inflammation, bacterial infections and cancer [23].

10. PHYTOCHEMICAL STUDY

The constituents present in plant play a vital role in the identification of crude drug [24]. *Acalypha indica* has a wide variety of nutrients such as carbohydrates, proteins, vitamins and lipids. The plant has a high content of iron, followed by copper, nickel, zinc and chromium [25].

10.1 Leaves

The leaves possess acaindinin, aurantiamide [26]. corilagin, ferulic acid, triacetoneamine and resin.

10.2 Whole Plant

The plant contains acalyphamide, acetonylgeraniin, caffeic acid, cysteine, gallic acid and tectoquinone [27].

10.3 Root

The roots have stigmasterol, syringic acid and 3,3' Methylene bis (4-hydroxyl coumarin). The plant shows a cyanogenetic glucoside, kaempferol, triacetoneamine, a base and acalyphin, an alkaloid. It also contains acalyphamide, 2- methylanthraquinone, amides, γ -sitosterol, beta-sitosterol, tri-o-methyl ellagic acid, stigmasterol, beta-sitosterol glucoside, quinine, tannin, resin, n-octacosanol, and essential oils [28].

11. PHARMACOLOGICAL ACTIVITY

11.1 Anti-venom Activity

The anti-venom derived from *Acalypha indica* methanolic extract is used to treat *Daboia russelli* venom [29] by increasing the life span up to 100% at 500mg/kg dose. Benzene, petroleum ether, chloroform and acetone extracts of *Acalypha indica* increased the life span by 35%, 47%, 47% and 77%, respectively against similar snake venoms [30]. The mechanism of action for the antivenom potency of the extracts is found to be antioxidant [31].

11.2 Post Coital Infertility Activity

The post coital infertility activity has been tested by four solvents in female albino rats. The

petroleum ether extract and ethanol extract were found to be most effective in causing significant anti-implantation activity. Both the extracts of *Acalypha indica* at 600mg/kg body weight showed estrogenic activity. Histological studies of the uterus were carried out to confirm this estrogenic potential of the plant [32].

11.3 Haemolysis

The haemolytic (acute intravascular effect) potential of *Acalypha indica* was evaluated after broth ingestion of the plant in patients. The patients were observed to have lack in glucose 6-phosphate dehydrogenase [33].

11.4 Wound Healing Activity

The *Acalypha indica* leaves were used to treat variety of skin problems. The ethanolic extract of *Acalypha indica* was used to evaluate the wound healing activity in rats using excision and incision models in rats. The extract showed less wound healing property [34].

11.5 Anthelmintic Activity

Anthelmintic potential of the methanolic and aqueous extracts of *Acalypha indica* were evaluated for their anthelmintic potential against Indian earth worms - *Pheretima posthuman*. The extracts were evaluated at 100mg/ml. Both the

extracts found to possess significant anthelmintic properties [35].

11.6 Anti-fungal Activity

Hexane, petroleum ether, chloroform, ethyl acetate, methanol and aqueous extracts of *Acalypha indica* was evaluated for its antifungal activity against *Aspergillus flavus*, *Aspergillus niger*, *Candida albicans*, *Candida glabrata*, *Candida tropicalis* and *Penicillium chrysogenum*. The phenolic compounds and flavonoidal derivatives of *Acalypha indica* were believed to be the source for antifungal properties [36-37].

11.7 Anti-inflammatory Activity

The anti-inflammatory properties of ethanolic extract of *Acalypha indica* was investigated using rats. The study was assessed using phenylbutazone as the standard drug. The anti-inflammatory potential of the plant was evaluated by carageen induced paw edema and measurement of percentage inhibition of albumin proteinase and denaturation. Both the assays showed 85% of inhibition, exhibiting no protein denaturation. Protein denaturation is one of the indicators for inflammation property. *Acalypha indica* plant extract stabilize the membrane by inhibiting hypotonicity induced lysis of an erythrocyte membrane analogous to a lysosomal membrane [38-39].

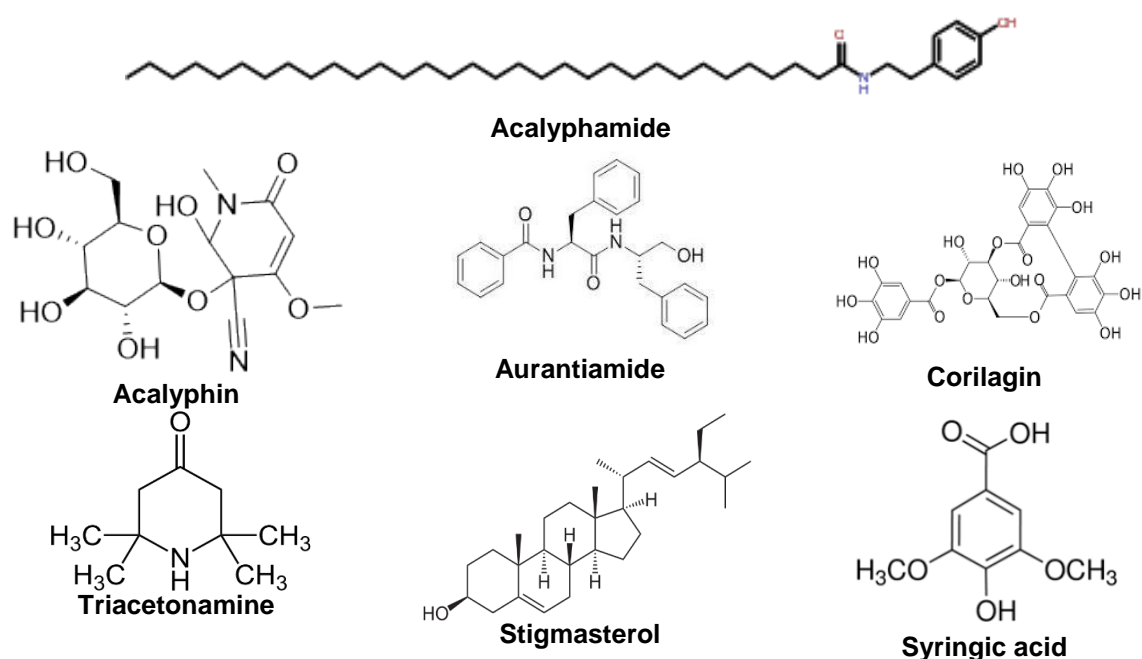


Fig. 3. Phytoconstituents of *Acalypha indica*

11.8 Hepatoprotective Activity

The hepatoprotective activity of methanolic extract of aerial parts of *Acalypha indica* was investigated at 300mg/kg in Wistar albino rats of both sex. Hepatotoxicity was induced using thioacetamide. After 48h of hepatotoxicant administration, the extract showed hepatoprotective activity by lowering the glutamic oxaloacetic transaminase (GOT), glutamic pyruvic transaminase (GPT), alkaline phosphatase (ALKP) levels. The results were comparable to the standard drug silymarin [40].

11.9 Anti-ulcer Activity

The phytoconstituents present in methanolic extract of *Acalypha indica* has the potency of inhibiting ulcer. The anti-ulcer activity was evaluated using pylorus ligation and swim stress models in Swiss albino rats. *A. indica* extracts were evaluated at doses of 50 and 100 mg/kg. Famotidine at 10 mg/kg per body weight is used as the standard drug. The extract at 100 mg/kg reduced the volume of gastric juice by 67.14%, total acidity 59.29%, free acidity 53.24% and 37.18% of ulcer index. The *Acalypha indica* extract showed anti-ulcerogenic potency and the results were comparable to the standard drug [41].

11.10 Analgesic Activity

Analgesic properties of *Acalypha indica* was evaluated by *in vivo* studies. Writhing reflex assay was used to determine the analgesic property of the *Acalypha indica* hexane extract [42]. Acetic acid was used to induce the pain in mice. Acetic acid involves two phases, first it will release serotonin and histamine and in the second phase it will involve prostaglandins in the inflammatory exudates in plant extract. The study was evaluated at 100 mg/kg and 200 mg/kg and aminopyrine was used as a positive control. The results were measured by counting the number of writhings induced within 20 minutes, immediately after the administration of the test drugs. The hexane extract produced up to 61.1% and 67.2% of writhing inhibition, respectively for the two doses. The analgesic effect produced the extract was comparable to the standard drug 79.9%. The hexane extract disrupted the first phase of inflammation formation by inhibiting the release of serotonin and histamine [43].

11.11 Psoriasis

Psoriasis is a chronic inflammatory skin problem characterized by rapid proliferation of keratinocytes and incomplete keratinization. The present study, shows anti-psoriatic effect of aqueous extract of *Acalypha indica*. A431 and B16-F10 cell lines were used as *in vitro* models. The *in vitro* study suggested that the leaf extract of *Acalypha indica* is capable of serving as anti-psoriasis agent [44].

12. CONCLUSION

A. indica is a common annual shrub freely grown in Indian gardens. It is wide spread all over the world. This comprehensive review highlights the information on *Acalypha indica* for phytochemical content and pharmacological properties. The plant is a potential source of carbohydrates, proteins, vitamins, lipids, polyphenols, tannins etc., and it is used in the treatment of cancer, inflammation, helminthiasis, microbes, diabetes, hyperlipidemic, obesity, venom poisoning and wounds. The present review shows the pharmacological properties of the *Acalypha indica* such as antivenom activity, post coital infertility activity, haemolysis, wound healing activity, anthelmintic activity, anti-fungal activity, anti-inflammatory activity, hepatoprotective activity, antiulcer activity, psoriasis and the various phytonstituents responsible for it have been reported.

DISCLAIMER

The products used for this research are commonly and predominantly use products in our area of research and country. There is absolutely no conflict of interest between the authors and producers of the products because we do not intend to use these products as an avenue for any litigation but for the advancement of knowledge. Also, the research was not funded by the producing company rather it was funded by personal efforts of the authors.

NOTE

The study highlights the efficacy of "Ayurved" which is an ancient tradition, used in some parts of India. This ancient concept should be carefully evaluated in the light of modern medical science and can be utilized partially if found suitable.

CONSENT

It is not applicable.

ETHICAL APPROVAL

It is not applicable.

COMPETING INTERESTS

Authors have declared that no competing interests exist.

REFERENCES

1. Rimi Mondal, Arvind Negi, and Manish Mishra. *Acalypha indica* – A Boon to mankind. World Journal of Pharmaceutical Research. 2021;10(3):764-798.
2. Takle V, Savad R, Kandalkar A, Akarte A, Patel A. Pharmacognostic and phytochemical investigations of aerial parts of *Acalypha indica* Linn. Pharmacognosy Journal. 2011;3:33-35.
3. Prajapati ND, Purohit SS, Sharma AK, Kumar TA. Handbook of Medicinal Plants, AGROBIOS (India) Jodhpur; 2003.
4. Indira Priya Darshini A. Studies on Antimicrobial activity of *Acalypha indica* along with preliminary phytochemical screening. International Journal of Life sciences and pharma research. 2015;5(3): 34-36.
5. Sahukari Ravi, Bhasha Shanmugam, Singamala Hari Prasad, Ganjikunta Venkata Subbaiah, Kesireddy Sathyavelu Reddy. Assessment of Potential Antioxidant Activity of Polyphenolic Fraction Separated from *Acalypha Indica* Leaves: An *In vitro* Approach. International Journal of Pharma Research & Review. 2015;4(8):77-82.
6. Md. Shahidul Islam, Hasnat Ara, Kazi Ishtiaq Ahmad, Md. Mayin Uddin. A review on medicinal uses of different plants of euphorbiaceae family. Universal Journal of Pharmaceutical Research. 2019;4(1):47-51.
7. Savithamma N, Sulochana C, Rao K. Ethnobotanical survey of plants used to treat asthma in Andhra Pradesh, Ind. J. Ethnopharmacol. 2007;113:54-61.
8. Scaffidi A, Algar D, Bohman B, Ghisalberti EL, Flematti G. Identification of the cat attractants isodihydronepetalactone and iso iridomyrmecin from *Acalypha indica*. Aust. J. Chem. 2016;69:169-173.
9. Marwah RG, Fatope MO, Al Mahrooqi R, Varma GB, Al Abadi H, Al-Burtamani SKS. Antioxidant capacity of some edible and wound healing plants in Oman. Food Chem. 2007;101:465-470.
10. Kankanamalage TN, Dharmadasa RM, Abeysinghe DC, Wijesekara RG. A survey on medicinal materials used in traditional systems of medicine in Sri Lanka. J. Ethnopharmacol. 2014;8;155(1):679-91.
11. Prem Kumar, Chakrapani P, Arunjyothi B, Rojarani A. Anti-epileptic activity of *Acalypha indica* methanolic leaves extract with animal experiment. International Journal of Pharmacognosy and Phytochemical Research. 2016;8(9):1560-1565.
12. Vigneshkumar P, Bhuvaneshwaran S, Analava M. Phytopharmacology of *Acalypha indica*: A review. International Journal of Biosciences, Alternative and Holistic Medicine. 2010;1:27-32.
13. Nor Syahiran, Syafiqah Saidin, Razauden Zulkifli, Ida Muhamad, Harisun Ya'akob, Hadi Nur. A review of *Acalypha indica* L. (Euphorbiaceae) as traditional medicinal plant and its therapeutic potential. Journal of Ethnopharmacology. 2017;207:146-173.
14. Sivasankari B, Anandharaj M, Gunasekaran P. An ethnobotanical study of indigenous knowledge on medicinal plants used by the village peoples of Thoppampatti, Dindigul district, Tamil Nadu, Ind. J. Ethnopharmacol. 2014;153: 408-423.
15. Sudhakar Chekuri, Lali Lingfa Shivaprasad Panjala, Sai Bindu KC, Roja Rani Anupalli. *Acalypha indica* L- an Important Medicinal Plant: A Brief Review of Its pharmacological Properties and restorative Potential. European Journal of Medicinal Plants. 2020;31(11):1-10.
16. Schmelzer GH, Gurib-Fakim, A. Plant Resources of Tropical Africa. Medicinal plants 1. PROTA Foundation, Wageningen, Netherlands. 2000;11(1).
17. Schmelzer GH, Gurib-Fakim A. "*Acalypha indica* L; 2011. Accessed 21 October 2021. Available: <https://www.prota4u.org/databas e/protav8.asp?g=pe&p=Acalypha+indica+L>.
18. Sudhakar chekuri, Narendar Vankudothu, Shivaprasad Panjala, Nirmala Babu Rao, Roja Rani Anupalli. Phytochemical

- analysis, antioxidant and antimicrobial activity of "*Acalypha indica*" leaf extracts in different organic solvents. International Journal of Phytomedicine. 2016;8(3):444-452.
19. Joshep Shaiju. Siddha Home Remedies, Kuppaimeni (*Acalypha indica*); 2009.
 20. Walter M Thomas. Review of *Acalypha Indica* (L.) In Traditional Siddha medicine. 2010.
 21. Jagatheeswari D, Deepa J, Sheik Jahabar Ali H and P.Ranganathan. *Acalypha indica* L - an Important medicinal plant: A review of Its traditional uses, and pharmacological properties. International journal of research botany. 2013;3(1):19-22.
 22. Saravanan P, Chandramohan G, Shanmuga Sundaram P, Sumathi P. A study on extraction and application of ecofriendly natural dye extracted from leaves of *Acalypha indica* Linn. on silk fabric. IJTFT. 2013;3(5):1-8.
 23. Das AK, Ahmed F, Biswas NN, Dev S, Masud MM. Diuretic activity of *Acalypha indica*. Dhaka Univ. J. Pharm. Sci. 2005;4: 1-2.
 24. Indira PP. Studies on antimicrobial activity of *Acalypha indica* along with preliminary phytochemical screening. Inter. J. life sciences and Pharm Research. 2015;5(3): L34-L38.
 25. Joy B, Mathew M, Awaad A, Govil J, Singh V. Antioxidant studies and chemical investigation of ethanol extract of *Acalypha indica* Linn. Drug Plants. 2010;1:261-279.
 26. Hungeling M, Lechtenberg M, Fronczek FR, Nahrstedt A. Cyanogenic and non-cyanogenic pyridine glucoside from *Acalypha indica* (Euphorbiaceae). Phytochem. 2009;70:270-277.
 27. Murugan T, Saranraj P. Antibacterial activity of various solvent extracts of the Indian herbal plant *Acalypha indica* against human pathogens causing nosocomial infection. International Journal of Pharmaceutical and Biological Archive. 2011;2(5):1473-1478.
 28. Chopra RN, Nayar SL, Chopra IC. Glossary of Indian Medical Plants. CSIR, New Delhi, 1956.
 29. Shirwaikar A, Rajendran K, Bodla R, Kumar CD. Neutralization potential of Viper Russell's (Russell's viper) venom by ethanol leaf extract of *Acalypha indica*. J. Ethnopharmacol. 2004;94:267-273.
 30. Rajendran K, Shirwaikar A, Mehta M, Bharathi RV. *In vitro* and *in vivo* anti-snake venom (*Daboia russelli*) studies on various leaf extracts of *Acalypha indica* Linn. International Journal of Phytomedicine, 2010;2(3):217-220.
 31. Bawarkar Hs: Snake venoms and antivenoms:critical supply issues J. Assoc. Phys. India 2004: 52:11-13.
 32. Tanmoy Sinha, Abhijit Bandyopadhyay. Ethno-Pharmacological importance and valuable Phytochemicals of *Acalypha indica* (L.) A Review. International Journal of Research in Pharmaceutical Sciences. 2012;3(3):360-368.
 33. Venkata Narasimha Kadali, Tadi Ramesh, Sudhakara Rao Pola, Sandeep BV, Divakar T. Evaluation of anti-hemolytic activity, antibacterial activity and phytochemical investigation of *Acalypha indica* methanolic leaf extract. International Journal of Botany Studies. 2016;1(2):14-18.
 34. Vinoth Raja A, Ramanathan T, Savitha S. Studies on wound healing property of coastal medicinal plants. Journal of Biosci. Tech. 2009;1(1):39-44.
 35. Chengaiah B, Kumar MK, Alagusundaram M, Sashikala C, Chetty MC. *In vitro* anthelmintic activity of roots of *Acalypha indica* Linn. International Journal of Pharm Tech Research. 2009;1:1499-1502.
 36. Sakthi SS, Geetha M, Saranraj P. Pharmacological screening of *Datura metel* and *Acalypha indica* for its antifungal activity against pathogenic fungi. International Journal of Pharmaceutical Science and Health Care. 2011;2:15-30.
 37. Hnatyszyn O, Juarez S, Ouvina A, Martino V, Zacchino S, Ferraro G. Phytochemical analysis and antifungal evaluation of *Sebastiania commersoniana* extracts. Pharm. Biol. 2007;45:404-406.
 38. Rahman MA, Bachar SC, Rahmatullah M. Analgesic and anti-inflammatory activity of methanolic extract of *Acalypha indica* Linn. Pak. J. Pharm. Sci. 2010;23:256-258.
 39. Soruba E, Sundaram V, PathyManian R, Kulanthaivelu K, Balasundaram S. Antioxidant, antibacterial and anti-inflammatory activity of *Acalypha indica* and *Terminalia chebula*: An *In-vitro* analysis. Research Journal of Pharmaceutical, Biological and Chemical Sciences. 2015;6:180.
 40. Globinmed, Malaysian Herbal Monograph, Accessed 21 October 2021. Available:https://www.globinmed.com/index.php?option=com_content&view=article&i

- d=106553:acalypha-indica-
l&catid=209&Itemid=143
41. Kalimuthu S, Rajesh P, Kannan VR, Balamurugan B, Chandrasekar T. Antiulcer activity of methanolic extract of *Acalypha indica* Linn. (Euphorbiaceae) by pylorus ligation and swim stress induced ulceration. *Journal of Pharmacy Research*. 2010;3:2779-2783.
 42. Vogel H. *Drug discovery and evaluation: Pharmacological assays*. Springer Science & Business Media; 2007.
 43. Mohuya Mojumdar, Arkajyoti Paul, Mohammad Shah Hafez Kabir, Md. Golamur Rahman, Fatema Tuz Zohora, Mohammed Shamim hasan, et al. Molecular docking and pass prediction for analgesic activity of some isolated compounds from *Acalypha indica* L and ADME/T property analysis of the compounds. *World Journal of Pharmaceutical Research*. 2016;5(7):1761-1770.
 44. Rajkiran Reddy Banala, Satish Kumar Vemuri, Gurava Reddy AV, Subbaiah GPV. Aqueous extract of *Acalypha indica* leaves for the treatment of Psoriasis: *In vitro* studies. *International Journal of Bioassays*. 2017;6.04:5360-5364.

© 2021 Kumar et al.; This is an Open Access article distributed under the terms of the Creative Commons Attribution License (<http://creativecommons.org/licenses/by/4.0>), which permits unrestricted use, distribution, and reproduction in any medium, provided the original work is properly cited.

Peer-review history:
The peer review history for this paper can be accessed here:
<https://www.sdiarticle5.com/review-history/81632>